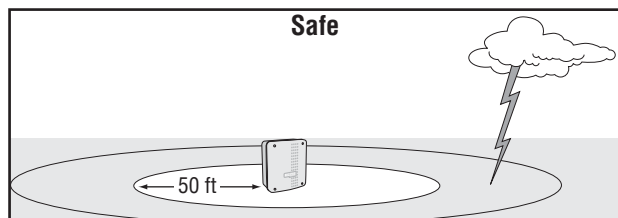


Miracle - One

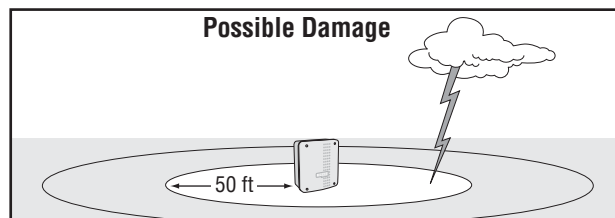
surge suppression installation manual

Elite Part # Q310, Q311

Please read this entire manual before installation



Properly grounded Miracle-One



Properly grounded Miracle-One

Inputs protected by the Surge Protection Module.

Name of Lines Protected	Number of Lines Protected
Motor (Master Unit)	1
Brake (Master Unit)	1
Limits (Master Unit)	1
Motor (Slave Unit)	1
Brake (Slave Unit)	1
Limits (Slave Unit)	1
Center Loop Command	1
Safety Loop Command	1
Exit Loop Command	1
Radio Receiver (Power and Relay)	3
Power Input	2

Earth Ground Rod Installation

Proper grounding gives an electrical charge, such as from an electrical static discharge or a lightning strike, a path from which to dissipate its energy safely into the earth.

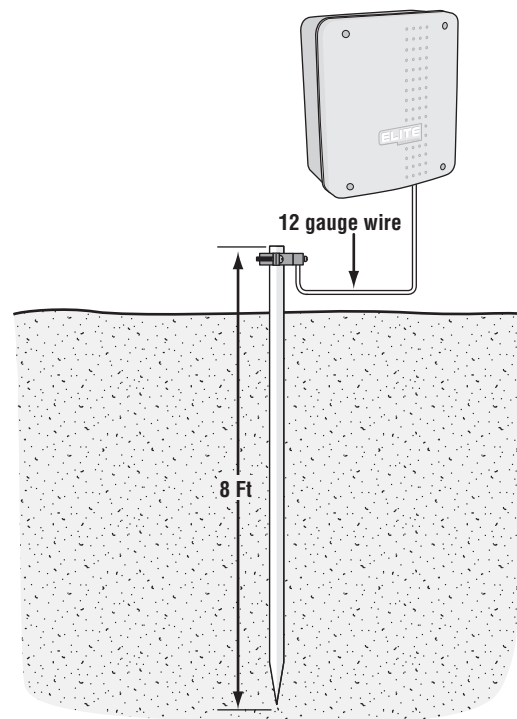
Without this path, the intense energy generated by lightning could be directed towards the Elite gate operator. Although nothing can absorb the tremendous power of a direct lightning strike, proper grounding can protect the gate operator in most cases.

The earth ground rod **must** be located within 3 feet from the gate operator. Use the proper type earth ground rod for your area.

⚠ Before digging more than 18" deep, contact local underground utility locating companies. ⚠
Avoid damaging gas, power, or other underground utility lines.



Elite Access is not responsible for improper installation or failure to comply with all necessary local building codes.

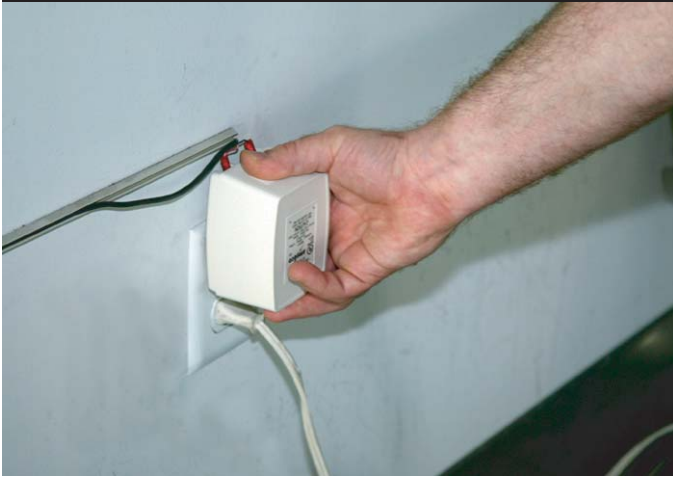


ELITE
ACCESS SYSTEMS INC.

Miracle-One Surge Protection Board

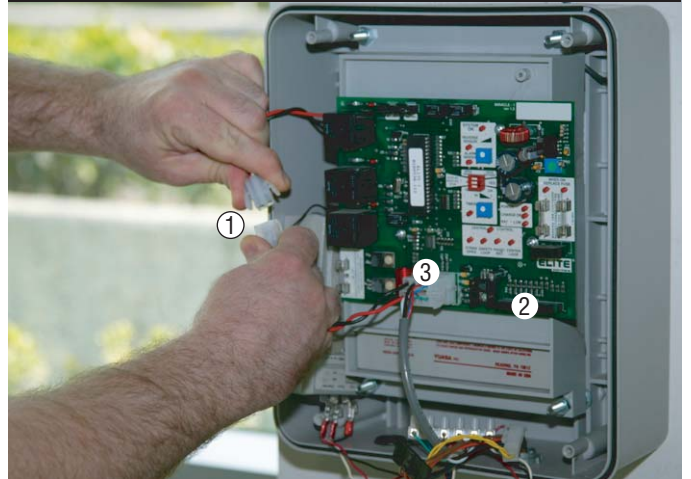
Step-by-Step Installation instructions

STEP 1



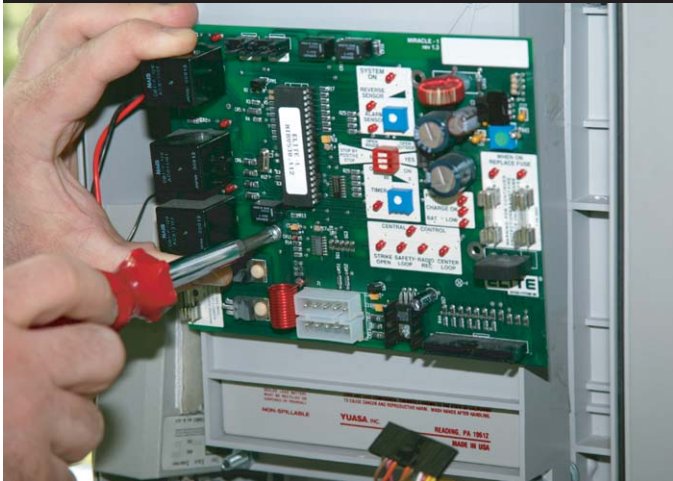
Unplug transformer.

STEP 2



① Disconnect the battery cable plug first ② Unplug J3 plug second
③ Unplug J1 plug last.

STEP 3



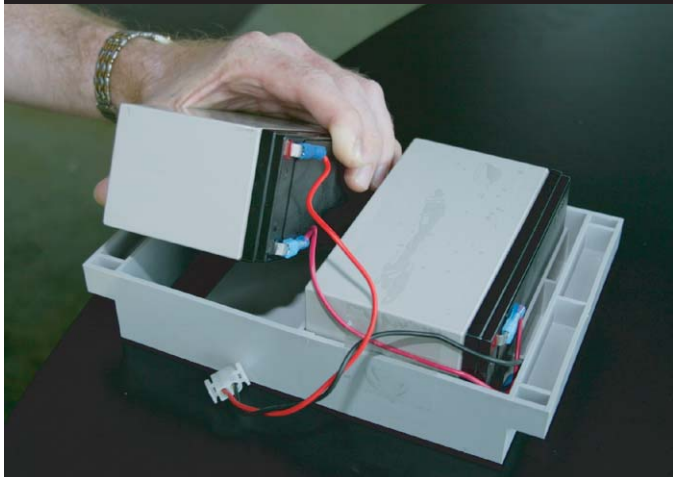
Remove the control board with 3 screws.

STEP 4



Remove the plastic battery rack with 4 nuts.

STEP 5



Remove the batteries from old rack and reinstall them into the new rack.

STEP 6



Place the new battery rack in the control box and secure with the 4 nuts.

STEP 7



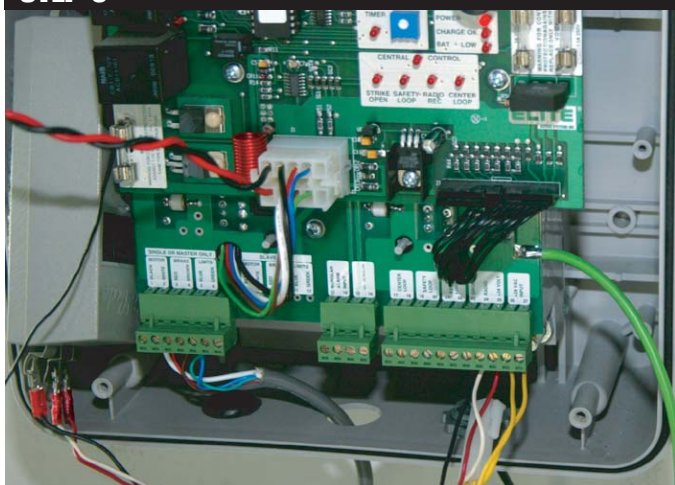
Install the surge suppressor board in position shown with 3 screws supplied.

STEP 8



Reinstall the control board in the same screw-hole positions. Connect the J1 and J3 plugs from the surge suppressor board to the control board.

STEP 9



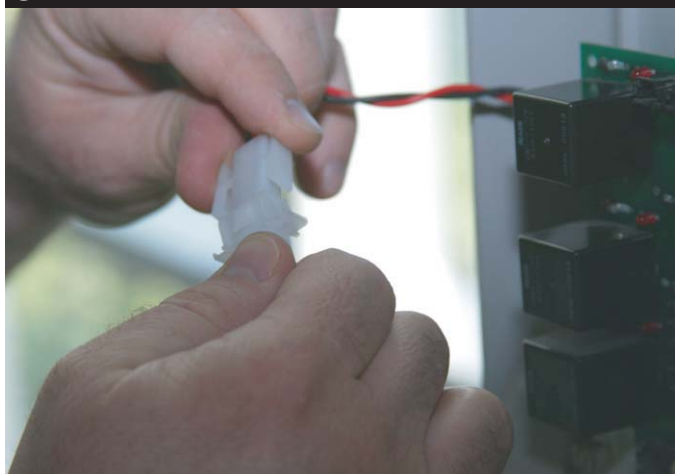
Rewire the old J1 and J3 plug wires to the surge suppressor terminals.

STEP 10



Plug transformer back in.

STEP 11



Reconnect the battery cable plug.

STEP 12



The green ground wire **MUST** be properly connected to an earth ground rod!

Additional Protection Against Surges for Gate Operators

For additional protection against surges, ensure that the cables or wires going to your accessories comply with the following rules:

All wires going to the accessories *must* be shielded wires.

The shield *must* be connected as follows:

- A) At the gate operator: To the chassis of the gate operator
- B) At the accessories: To their chassis (Earth grounding at the accessories will be even more beneficial)

Ensure that the connections to the chassis are made as tight as possible to create good contact.

For Toll Free Technical Support: **1-888-ELITE-10**

